

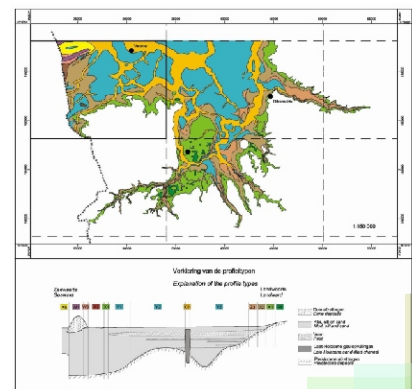
Geological Map of Belgium 1: 25.000

Sequence Map of the Holocene Coastal Deposits

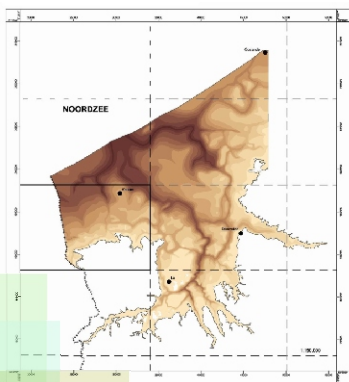
The Belgian Geological Survey has published a series of geological maps of the western coastal plain (polders), an area which subsoil is characterised by frequent lateral and vertical changes in lithology. This aspect is far too often neglected because it is not well known. Therefore, these maps will form a useful tool for civil engineers, planners and policy makers.

The geological map at a 1/25.000 scale consists of two sheets:

- The **General Sequence Map** representing the entire vertical sequence of the Holocene sediment body in a three-dimensional way with profile types with a user-friendly legend. Geological cross-sections illustrate the lithological variability of the subsoil.
- The **Subsidiary Map** shows a contour map of the base of the coastal Holocene sediments which are very susceptible to compaction. The contour map indicates the depth of the subsoil having a greater bearing capacity. The Subsidiary Map also comprises a palaeogeographical reconstruction of the area during the Holocene in relation to the rising sea level.



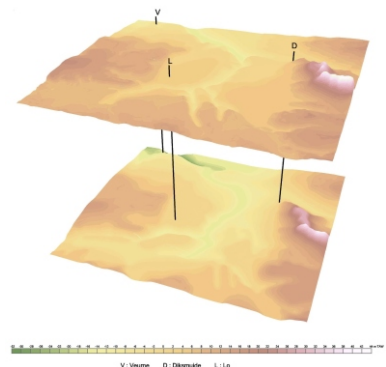
General sequence map of :
De Moeren-Veurne, Lampernisse-Diksmuide
en Lo-Langemark



Base of the Holocene coastal deposits

These different aspects together on one map give useful information for the geologist, as well as for the civil engineer, planner, geographer, archaeologist, historian, or for people just interested in the geological setting and development of the region.

The following maps are available: De Moeren-Veurne (nr 19/3-4), Lampernisse-Diksmuide (nr 20/1-2) en Lo-Langemark (nr 20/5-6), Nieuwpoort-Leke (nr 12/5-6), De Panne-Oostduinkerke (nr 11/7-8), Middelkerke-Oostende (nr 12/1-2).



3-D model of the Eocene (below)
and Weichselian (above) surface
of the palaeovalley of the Yser

Maps are available in flat and folded format (Price: 24€)
and on CD-Rom (Price: 15€).

The maps can be ordered at the Belgian Geological Survey, Jennerstraat
13, 1000 Brussel or via e-mail: gsb@naturalsciences.be
with indication of the number of the map, number of copies and format.